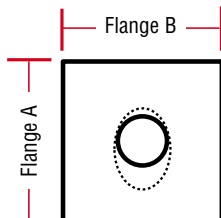
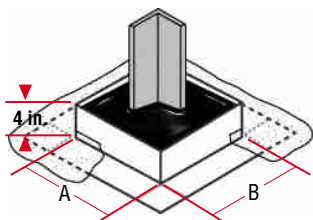


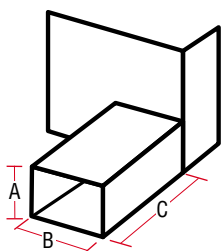
SUB BASE 28 Gauge Galvanized Steel


CMI#	QTY	Top Opening	Base Opening	Flange: A x B
SJ4G	20	4 in. diameter	4.25 in. x 6.25 in.	21 in. x 24 in.
SJ7G	10	7 in. diameter	7.5 in. x 9 in.	24 in. x 28 in.
SB51	1	8.5 in. diameter	8.5 in.	17 in. x 17 in.

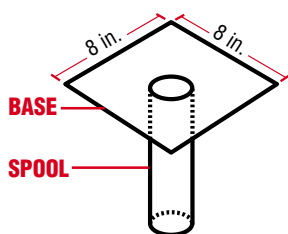
PITCH PAN 4 inch nailing flange. Galvanized Steel Construction.


Dimensions (A x B)	Spilt Base	Closed Base
4 in. x 4 in.	PPS44	PP44
6 in. x 6 in.	PPS66	PP66

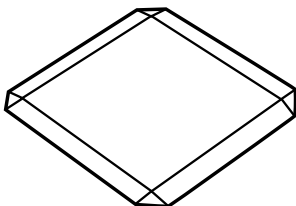
Also available in: Two Piece, Hot Solder, and other gauges, sizes and materials.

SCUPPER


Size: A x B x C	Left	Center	Right
2 in. x 3 in. x 10 in.	SCP2310L	SCP2310C	SCP2310R
2 in. x 3 in. x 8 in.	-	SCP238C	-
3 in. x 4 in. x 10 in.	SCP3410L	SCP3410C	SCP3410R
4 in. x 4 in. x 10 in.	-	SCP4410C	-
4 in. x 6 in. x 10 in.	-	SCP4610C	SCP4610R

SCUPPER DROP 26 Gauge.


CMI#	QTY	Base	Spool Diameter	Spool Length
SSD210G	50	8 in. x 8 in.	1.9375 in.	9.5 in.
SSD310G	25	8 in. x 8 in.	2.75 in.	9.5 in.

TERMITE SHIELD


CMI#	QTY	Size	Material
TMS88	100	9 in. x 9 in.	28 Gauge Galvanized