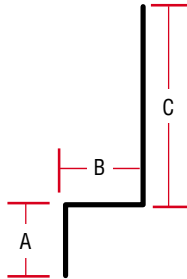
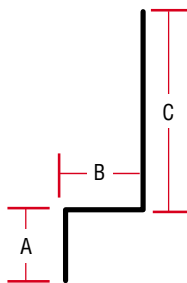


SIDING Z-BAR: 28 GAUGE 10 foot lengths. Pack Quantity: 10 Pieces. 26 Gauge available.


	Dimensions	Galv.	Black	Brown	Char.	D. Brown	Gray	White
3/8	0.5 in. x 0.375 in. x 2.125 in.	SZB38G	SZB38BL	SZB38BR	SZB38CH	SZB38BRW	SZB38GR	SZB38WH
7/16	0.5 in. x 0.4375 in. x 2.125 in.	SZB716G	SZB716BL	SZB716BR	SZB716CH	SZB716BRW	SZB716GR	SZB716WH
1/2	0.5 in. x 0.5 in. x 2 in.	SZB12G	SZB12BL	SZB12BR	SZB12CH	SZB12BRW	SZB12GR	SZ12WH
5/8	0.5 in. x 0.625 in. x 1.875 in.	SZB58G	SZB58BL	SZB58BR	SZB58CH	SZB58BRW	SZB58GR	SZ58WH
3/4	0.5 in. x 0.75 in. x 1.75 in.	SZB34G	SZB34BL	SZB34BR	SZB34CH	SZB34BRW	SZB34GR	SZ34WH
1	0.5 in. x 1 in. x 1.5 in.	SZB1G	-	-	-	-		
1 1/4	0.5 in. x 1.25 in. x 1.5 in.	SZB125G	-	-	-	-		
1 1/2	0.5 in. x 1.5 in. x 1 in.	SZB115G	-	-	-	-		

Z-BAR 10 foot lengths. Pack Quantity: 10 Pieces


SIZE: A x B x C	28 Ga. Galvanized	26 Ga. Galvanized	26 Ga. Galv. 110°
2 in. x 0.75 in. x 2 in.	ZB23/4G	-	-
2 in. x 1 in. x 2 in.	ZB5G	ZB5G-26	ZB5G-110-26
2 in. x 1 in. x 3 in.	ZB6G	ZB6G-26	-
2 in. x 1 in. x 4 in.	-	ZB214G-26	-
2 in. x 1 in. x 3 in.	ZB6G	-	-
2 in. x 1.5 in. x 2 in.	ZB55G	ZB55G-26	ZB55G-26-110
2 in. x 1.5 in. x 3 in.	-	ZB65G-26	-
2 in. x 1.5 in. x 3.5 in.	-	ZB7G-1.5-26	-
2 in. x 1.5 in. x 4 in.	-	ZB2154G-26	ZB7G-1.5-26-110
2 in. x 1.75 in. x 2.25 in.	ZB6G-1.75	ZB6G-1.75-26-110	-
3 in. x 2 in. x 2 in.	-	ZB7G-26	-
4 in. x 2 in. x 2 in.	-	ZB8G-26	-