

LOW PROFILE DORMER VENT Galvanized Steel



Description	CMI Part #	N.F.V.	Face	R. Opening	QTY.	-
18 in. x 7 inch, Hard Flange	LPDH18	81 sq. in.	18 in. x 7 in.	18 in. x 10 in.	6	
19 in. x 4 inch, Hard Flange	LPDG19	43 sq. in.	19 in. x 4 in.	19 in. x 10 in.	10	
19 in. x 4 inch, Shingle STD Base	LPDG19-SGL	43 sq. in.	19 in. x 4 in.	19 in. x 10 in.	6	
19 in. x 4 inch, Shake FHA Base	LPDH19-A	43 sq. in.	19 in. x 4 in.	19 in. x 10 in.	6	
8 in. x 30 inch, Zincalume	LPDH30Z	200 sq. in.	30 in. x 8 in.	22 in. x 10 in.	1	
Low Profile Stamped Dormer (Simpson)	LPSD20	48 sq. in.	20 in. x 2.75 in.	19 in. x 10 in.	6	
30 inch Sub Base	LPD30SJ	200 sq. in.	n/a	22 in. x 10 in.	50	

HALF ROUND DORMER VENT Galvanized Steel. Pack Quantity: 1.



Description	CMI Part #	N.F.V.	Face	R. Opening	-	
12 in. x 24 in., Square Tail, Galvanized	BH24	100 sq. in.	24 in. x 12 in.	12 in. x 9 in.		
12 in. x 24 in., Copper	BH24C	100 sq. in.	24 in. x 12 in.	12 in. x 9 in.		
12 in. x 24 in., Long Tail, 26 Ga.	BH24-LTK	100 sq. in.	24 in. x 12 in.	12 in. x 9 in.		
14 in. x 12 in., Galvanized - Rectangular	STDG1412	63 sq. in.	14 in. x 11 in.	14 in. x 14 in.		
9 in. x 18 in. Galvanized	STDH18GB	75 sq. in.	18 in. x 9 in.	12 in. x 9 in.		
9 in. x 18 in. Soft Aluminum	STDS18-3B	75 sq. in.	18 in. x 9 in.	12 in. x 9 in.		
12 in. x 24 in., No Hem, 24 Ga.	STDH24G-26NH	100 sq. in.	24 in. x 12 in.	12 in. x 9 in.		
12 in. x 24 in., No Hem, Long Tail, 26 Ga.	STDH24G-26NHLT	100 sq. in.	24 in. x 12 in.	12 in. x 9 in.		
12 in. x 24 in., Alum. 1 side, Tile Kick 2 sides	STDS24-TILE	100 sq. in.	24 in. x 12 in.	12 in. x 9 in.		
12 in. x 24 in., Alum. Flange 2 sides*	STDS24-2B	100 sq. in.	24 in. x 12 in.	12 in. x 9 in.		
12 in. x 24 in., Alum. Flange 3 sides*	STDS24-3B	100 sq. in.	24 in. x 12 in.	12 in. x 9 in.		
14 in. x 19 in., Peak Top Dormer	PTD	90 sq. in.	19 in. x 13.5 in.	12 in. x 9 in.		
14 in. x 19 in., Peak Top Aluminum Flange	PTD-TILE	90 sq. in.	19 in. x 13.5 in.	12 in. x 9 in.		
18 inch, Sub Base	STD18SJ	75 sq. in.	N/A	12 in. x 9 in.		
24 inch, Sub Base	STD24SJ	100 sq. in.	N/A	14 in. x 14 in.		

Conforms to Federal Spec. QQ-5775A, Type 1, Class 4 ASTM A-527. Meets FHA codes

28 Gauge galvanized steel construction. One piece base with extra long flashing under opening.

Screen - 1/4" galvanized mesh. Designed for Composition Roof, Shake or Flat Concrete Tile, any pitch.

*Alum. sides for curved tile roofs.

ECONO VENT 26 Gauge Galvanized Steel. Pack Quantity: 1.



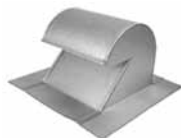
Description	CMI Part #	N.F.V.	Flange	R. Opening	-	
12 in. x 12 in.	1212EV	160 sq. in.	20 in. x 20 in.	12 in. x 12 in.	-	
14 in. x 14 in.	1414EV	186 sq. in.	22 in. x 22 in.	14 in. x 14 in.	-	
18 in. x 18 in.	1818EV	240 sq. in.	26 in. x 26 in.	18 in. x 18 in.	-	

J VENT



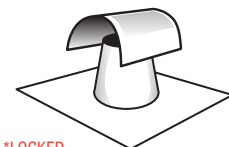
Size	CMI Part #	N.F.V.	Flange	QTY.	-
3 inch	JV328	7 sq. in.	3 in. x 8 in.	24	
4 inch	JV428	12 sq. in.	4 in. x 9 in.	24	
4 inch	JV428-1212	12 sq. in.	4 in. x 12 in.	24	
8 inch	JV826	50 sq. in.	8 in. x 15 in.	4	

GOOSENECK VENT 26 Gauge Galvanized Steel. Pack Quantity: 6.



Description	CMI Part #	Flange	R. Opening	-	-
10 in. Gooseneck Vent w/Damper	GND10G	15 in. x 15 in.	10 in. x 10 in.	-	-

T-TOP ROOF JACK & SUB-BASE



*LOCKED

Size	Galv.	Bond.	QTY.	11 in. Base	Sub Base	Std. Base	FHA Base	Alum. Base	Alum. Base: Soil/Steel
4 inch	RJ4G	RJ4B	12	RJ411G	SJ4G	RJ4G-SB	RJ4GLK-FHA*	RJ4S	RJ4DSA-SLT
7 inch	RJ7G	RJ7B	8	-	SJ7G	-	RJ7GLK-FHA*	RJ7S	RJ7SLK*

TURBINE VENT Pack Quantity: 1



Description	Mill	Black	Brown	Weathered Wood	N.F.V.
12 inch Internal Brace	TIB12SML	TIB12SBL	TIB12SBR	TIB12SWW	95 sq. in.
14 inch Internal Brace	TIB14SML	TIB14SBL	TIB14SBR	TIB14SWW	132 sq. in.

Maintenance free dual ball bearing system. • Heavy duty polypropylene bracing system • Adjustable base

STATIC ROOF VENTS

Description	N.F.V.	Mill	Black	Brown	Lt. Grey	Weathered Gray	White	QTY.
RVG38 - Galvanized	38 sq. in.	RVG38M	RVG38BL	RVG38BR	RVG38LG	RVG38WG	-	6



Description	N.F.V.	Mill	Black	Brown	Lt. Grey	Weathered Gray	White	QTY.
RV40 - Galvanized	40 sq. in.	RVG40M	RVG40BL	RVG40BR	-	RVG40WG	-	10



Description	N.F.V.	Mill	Black	Brown	Lt. Grey	Weathered Gray	White	QTY.
RV50 - Galvanized	50 sq. in.	RVGL50M	RVGL50BL	RVGL50BR	-	RVGL50WG	RVGL50WH	10



Description	N.F.V.	Mill	Black	Brown	Lt. Grey	Weathered Gray	White	QTY.
RV51 - Galvanized	51 sq. in.	RVG51M	RVG51BL	RVG51BR	-	RVG51WG	-	10
RV51 - Aluminum	51 sq. in.	RVA51M	RVA51BK	RVA51BR	-	-	RVA51WH	10
RV51 - High Collar, Galv.	51 sq. in.	RVG51-HC	-	-	-	-	-	6
RV51 - Big Base, Galv.	51 sq. in.	RVG51-BB	-	-	-	-	-	10



Description	N.F.V.	Mill	Black	Brown	Lt. Grey	Weathered Gray	White	QTY.
RV55 - Galvanized	55 sq. in.	-	RVG55BL	RVG55BR	-	RVG55WG	-	6



Description	N.F.V.	Black	D.Brown	L. Brown	Lt. Grey	Weathered Gray	White	QTY.
Plastic Roof Vent	50 sq. in.	PRV50BL	PRV50DBR	PRV50LBR	PRV50LG	PRV50WG	PRV50WH	10
Plastic Roof Vent	61 sq. in.	PRV61BL	PRV61BR	-	PRV61LG	PRV61WG	-	10



PLASTIC

ROOF EXHAUST STEM VENTS

Description	Black	Brown	D. Brown	Lt. Gray	W'd Grey	White	QTY.
4 in. Plastic Stem Vent	PRCS4BL	-	PRCS4DBR	PRCS4LG	PRCS4WG	PRCS4WH	4
4 in. Metal Stem Vent	PBK4XBK	PBK4XBR	-	-	-	-	1
6 in. Metal Stem Vent	PBK6XBK	PBK6XBR	-	-	-	-	1
8 in. Metal Stem Vent	PBK8XBK	-	-	-	-	-	1



For exhaust pipes terminating through the roof. **Removable stem. DO NOT USE STAPLES.** Fasten with roofing nails, seal perimeter with roofing cement.

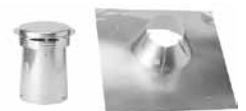
STORM COLLARS & VENT CAPS Pack Quantity: 12

Description	3 inch	4 inch	5 inch	6 inch	8 inch	-
Round Vent Cap	RBVC3	RBVC4	RBVC5	RBVC6	-	
Round Vent Cap - Locking	RBVCE3	-	-	-	-	
Round Storm Collar	RSC3	RSC4	RSC5	-	-	
Adjust. Round Storm Collar	RSCA3	RSCA4	RSCA5	RSCA6	RSCA8	
Oval Vent Cap	-	OBVC4	-	-	-	
Oval Storm Collar	-	OSC4	-	-	-	



CODE CAPS & BASE For .025 roof assembly. Soft Aluminum base with nailing flange, forms to 'S' style spanish tile roofs.

Description	3 inch	QTY.	4 inch	QTY.	5 inch	QTY.	6 inch	QTY.	8 inch	QTY.
Top + Shake Base Combo	CC3SH	6	CC4SH	6	CC5SH	6	CC6SH	6	CC8SH	8
Top + Shingle Base Combo	-	-	CC4SGL	6	-	-	CC6SGL	6	CC8SGL	6
Top + Oval Shingle Base Combo	-	-	CC4OSGL-H	6	-	-	-	-	-	-
Top Only	-	-	CC4T	24	-	-	CC6T	12	CC8T	8
Base Only	-	-	CC4B	12	-	-	CC6B	12	CC8B	6



FLAME GUARD™ - SPARK ARRESTOR CHIMNEY CAP

Description	CMI Part #	QTY.	-
Durable Black Powder Coat Finish	CG3BLK	1	
Lifetime Guarantee Stainless Steel	CG3SS	1	

